

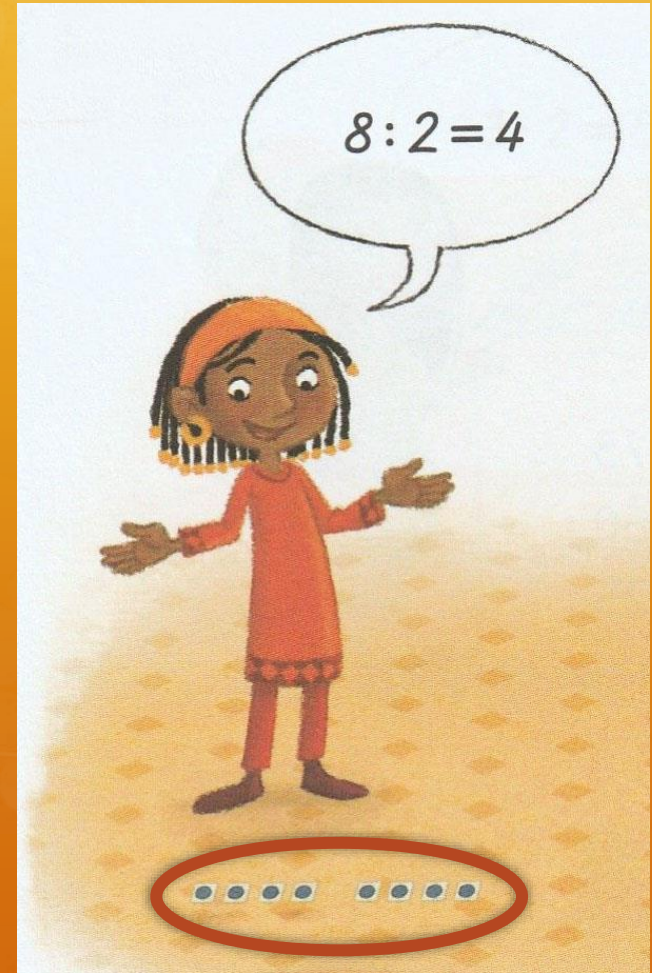
# Division großer Zahlen

Erklärvideo Mathematik Klasse 3

Sprachheilschule Crailsheim

# Division - geteilt durch

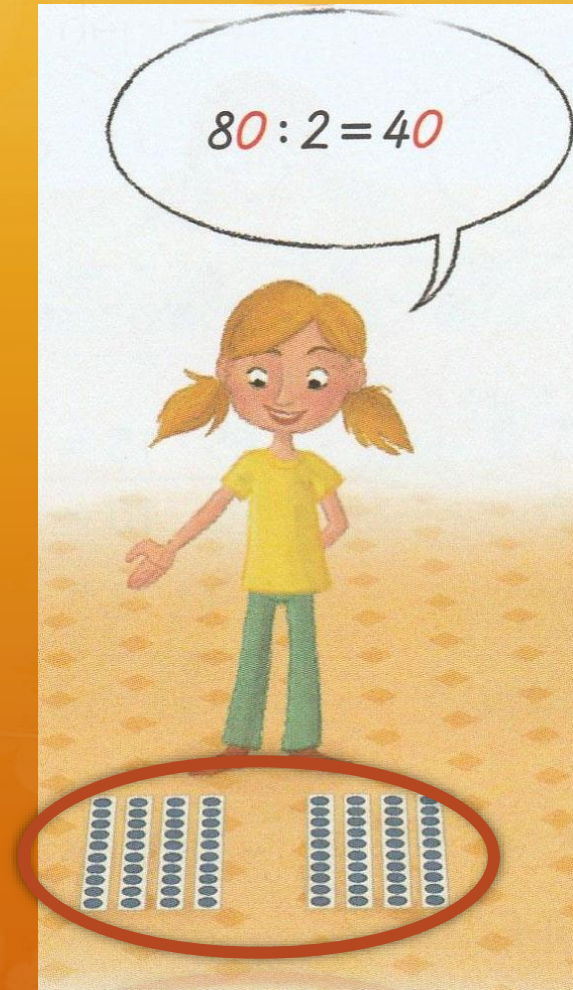
$$8 : 2 = 4$$



# Division - geteilt durch

$$8 : 2 = 4$$

$$80 : 2 = 40$$

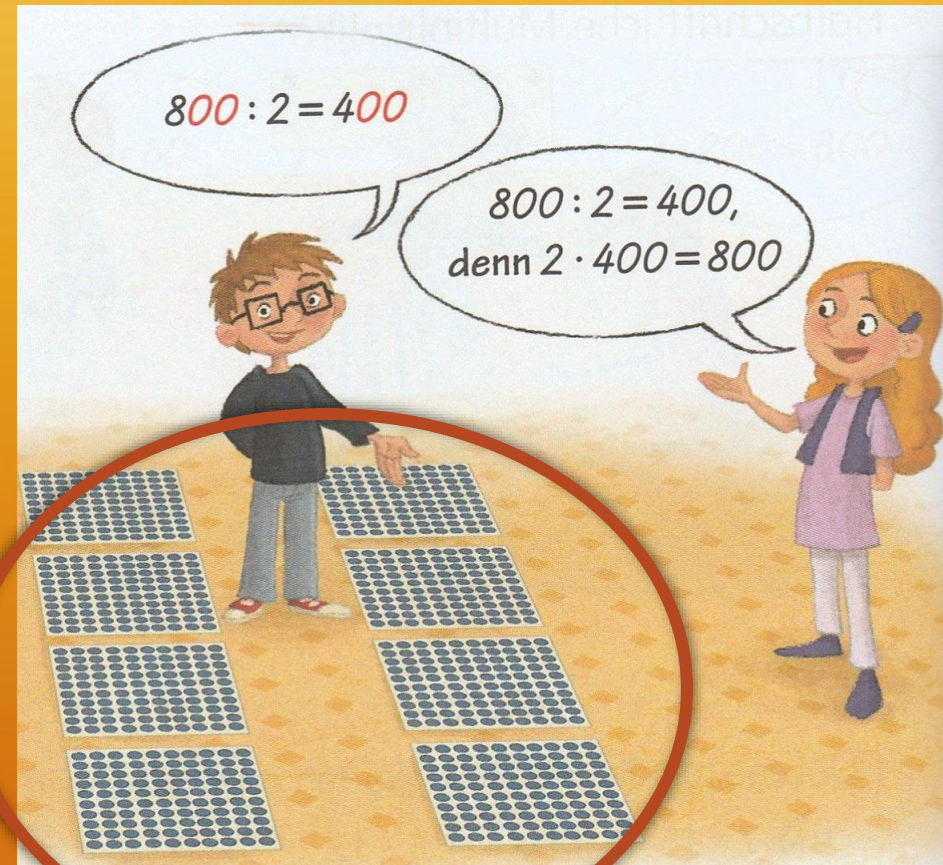


# Division - geteilt durch

$$8 : 2 = 4$$

$$80 : 2 = 40$$

$$800 : 2 = 400$$



# Division - geteilt durch

$$8 : 2 = 4$$

$$80 : 2 = 40$$

$$800 : 2 = 400$$

$$\cancel{80} : \cancel{20} = 4$$

$$\cancel{800} : \cancel{200} = 4$$

$$8\cancel{00} : 2\cancel{0} = 40$$

# Division - geteilt durch

$$12 : 6 = 2$$

$$120 : 6 = 20$$

$$1200 : 6 = 200$$

$$12\cancel{0} : 6\cancel{0} = 2$$

$$12\cancel{00} : 6\cancel{00} = 2$$

$$12\cancel{00} : 6\cancel{0} = 20$$

Buch S. 46

Bilder des Films:

→ Homepage der Schule

→ SchoolFox